

ID 3104.9

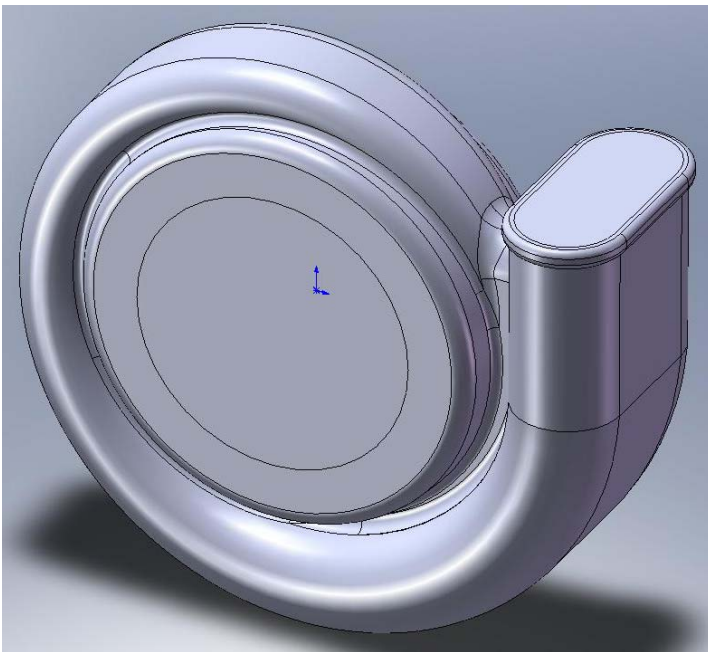
Industrial Design Computing II – Blower

Instructor: Suzi Boyden | sjboyden@gmail.com | www.sjboyden.com

Project:
3D Sketch

Skills:
→ Spiral/helix, Sweeps, Guide Curves

Specifics:
Follow the instructions to create a blower housing. Create a drawing that shows the standard isometric, as well as a front, side and top view. Import the standard dimensions. See example.



Submit:
→ Assembly file (ex: sboyden9.sldprt)
→ Part Drawing (ex: sboyden9.slddrw)
→ PDF of drawing (ex: sboyden9.pdf)
→ **Print of PDF**

Schedule:
Lecture 4.6.2009
Project due 4.13.2009 (by 6:15pm)